



Urb. Maria del Carmen Facility Damages Repair

Facility Damage – Chain Link Fence

- 1) Remove and dispose existing damaged chain link fence.
- 2) Supply and install new 6' height chain link fence sections.
- 3) Galvanized steel chain link #9 gauge 2" mesh
- 4) 2" diameter galvanized pipes
- 5) Quantity 480 LF approximately.
- 6) Refer to Standard Drawings

Facility Damage – Playground Equipment

- 1) Remove and dispose of any existing damaged playground equipment.
- 2) Supply and install new 4-seat Heavy Duty Tripod Swing Set with Strap Seats similar or equal to Double Bay Swings Model PBP-8-2S. One (1) each.
- 3) Supply and install new Freestanding Single Slide 8' Height similar or equal to Outdoor Fitness Park Equipment Model HT090. One (1) each.
- 4) Supply and install new double Seesaw similar or equal to Outdoor Fitness SW3007, 10'x8'.

Facility Damage – Basketball Court

- 1) Remove existing basketball court markings. See multisport Court Technical Specifications.
 - a. Apply a paint stripper
 - b. Scrape away the paint
 - c. Rinse the concrete with pressure washer
- 2) Paint multisport court markings and goals. See multisport Court Technical Specifications.
- 3) Paint concrete benches.
- 4) Paint metal pole up to 10' height.
- 5) See paint in general specifications.



- 6) Color to be selected by owner.
- 7) See SOW reference pictures.

Paint In General Specifications

- 1) Clean and patch all existing surfaces
- 2) Flooring: Apply anti-slip floor coating designed for heavy pedestrian traffic.
- 3) Walls: Clean and patch existing surface. Apply one (1) coat of primer and two (2) coats of paint.

Product Description:

- a. Floors: Similar or equal to American Safety Technologies AS-150 HAPS Free Anti-Slip Coating
- b. Steel Structures: Similar or equal to Sherwin Williams Pro Industrial DTM Acrylic Primer/Finish. Apply one coat of primer, two (2) coats of paint.
- c. Exterior Wall Paint: Similar or equal to Sherwin-Williams Quick Dry Interior/Exterior Stain Blocking Primer. Apply one coat of primer, two (2) coats of paint. A-100 Exterior acrylic Latex.

Buy American Act Requirements:

Buy American requirements apply to purchases of iron, steel, and other manufactured products permanently incorporated into infrastructure projects. To be considered as being produced in the U.S., goods must be manufactured in the U.S. and at least 50% of the cost of their components must come from the U.S.

Additional Notes:

- 1) The contractor is responsible to verify the existing electrical system conditions and shall repair any damage found and leave the project fully operational, properly grounded, coordinated with all the other trades and with all the required equipment, interconnections, fittings, and appurtenances necessary for the safe operation of his intended use.



- 2) All the electrical installation shall be done in a neat and workmanlike manner, according to the latest edition of the National Electrical Code (N.E.C.), the Puerto Rico Electric Power Authority (LUMA) latest standards and the Negociado de Telecomunicaciones de Puerto Rico latest practices.
- 3) The contractor shall visit the job site and become acquainted with the existing field conditions.
- 4) The contractor shall submit with the proposal, the proposed Synthetic Acrylic System specifications with the warranty terms and conditions. The system must be equal or similar to the specified and shall comply with a minimum of minimum five (5) year warranty, excluding damages by improper use and wear due to normal use.
- 5) The contractor is responsible to comply with all laws, regulations, codes, professional licenses required by Municipal, State, Federal and Local laws.

Damage Repairs – Urb. Maria del Carmen, Corozal

Scope of Work Reference

Coordinates: Latitude – 18.341034, Longitude: -66.302511



Existing chain link repairs:



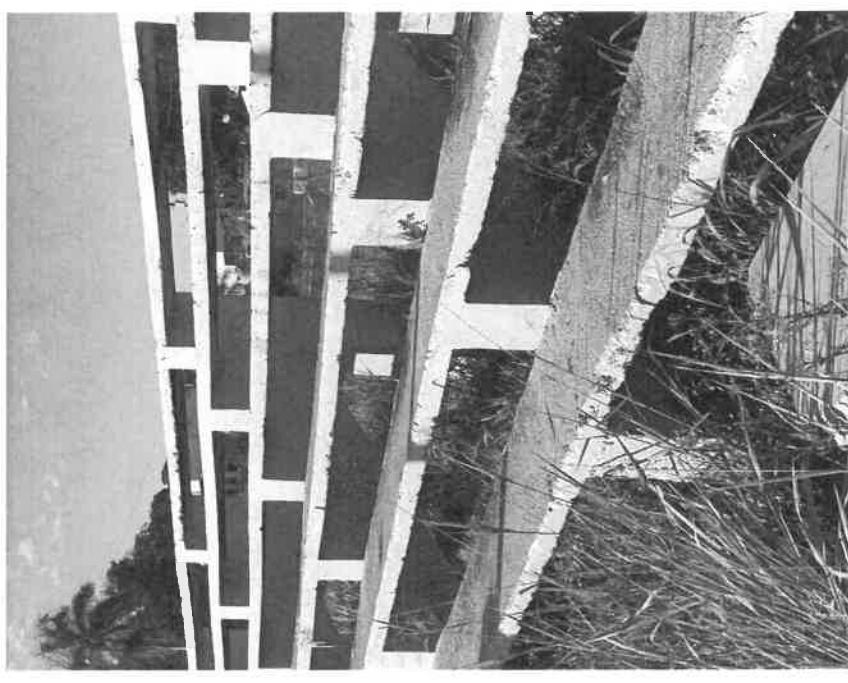
Replace existing chain link fence sections 480 Lf approx.

* See Scope of work attached

-

800.368.2422 • Klayco Technologies

Paint Work:

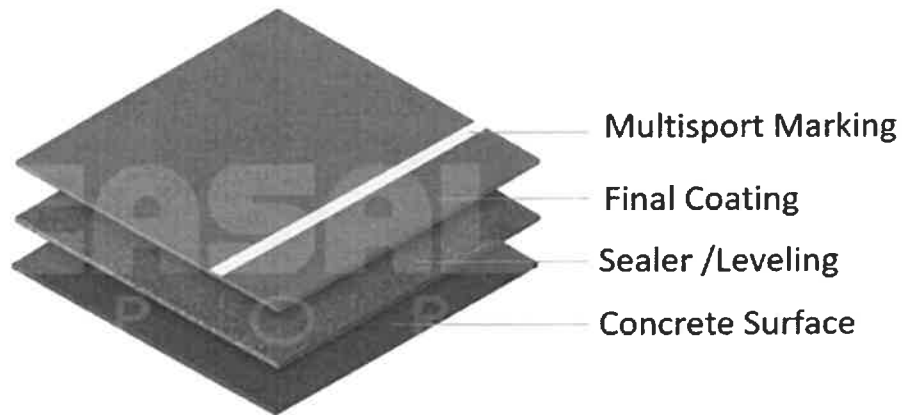


- Paint existing basketball court.
- Paint existing concrete bleacher
- Paint existing steel basketball goal, pole and volleyball post.
- Paint existing concrete building.



Multisport Court Repair Scope of Work
Multisport Acrylic Synthetic Flooring System
Technical Specification

Basketball Court Surface Preparation



Acrylic Synthetic Sport Flooring System

1) Concrete surface preparation

- Remove existing surface paint with paint removal product.



- Product should be compatible with acrylic system product.
- Scarify existing concrete.
- Pressure washes existing scarified concrete surface to remove all remaining dust.
- Treat all concrete cracks with product compatible and recommended by system's manufacturer.
- Seal existing concrete surface applying a synthetic resin-based filler using an acrylic resin based coating containing select sands, in water emulsion, especially formulated to seal concrete surfaces. Be sure that the product is compatible and recommended by system's manufacturer.

CHARACTERISTICS OF THE LIQUID PRODUCT			
Characteristic	U.M.	Value	Tolerance
Specific weight	Kg/dm ³	1,64	± 0,1
Dry mass residue	%	75	± 3
Dry volume residue	%	59	± 3
Residue at 450°C	%	61	± 3
Brookfield viscosity (with Brookfield viscosimeter rotor no. 6, speed 10)	mPa·s	90000	± 5000
pH	-	8	± 1

- Surface must be sloped correctly to ensure rainwater runoff and prevent pooling.
- 2) Supply and apply Final Acrylic Coating System. Acrylic resin-based covering developed for multi-purpose sports flooring. The hard resin-based formula with UV ray resistant pigments and select sands that makes the ideal sports surfaces for many different games. Resin surfaces must be waterproof (non-draining).

CHARACTERISTICS OF THE LIQUID PRODUCT			
Characteristic	U.M.	Value	Tolerance
Specific weight	Kg/dm ³	1,7	± 0,1
Dry mass residue	%	76	± 3
Dry volume residue	%	60	± 3
Residue at 450°C	%	65	± 3
Brookfield viscosity (with Brookfield viscosimeter rotor no. 6, speed 3)	mPa·s	240000	± 12000
pH	-	8	± 1

- Coverage as recommended by manufacturer.
- Ductile and resistant to abrasion



- Weather Resistant
- Maintenance Free
- Always available to play even when a heavy rain or hot weather have occurred.

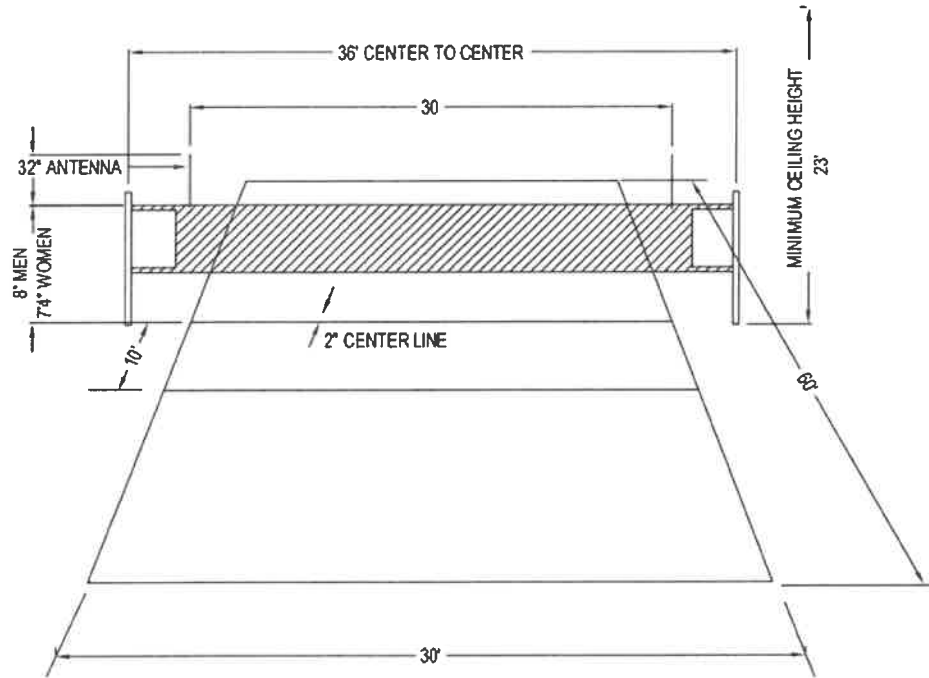
3) Basketball court marking – use a highly covering acrylic paint, especially developed to mark field (2") lines on acrylic surfaces.

CHARACTERISTICS OF THE LIQUID PRODUCT			
Characteristic	U.M.	Value	Tolerance
Specific weight	Kg/dm ³	1,38	± 0,1
Dry mass residue	%	54	± 0,5
Dry volume residue	%	36	± 0,5
Residue at 450°C	%	37	± 0,5
Brookfield viscosity (with Brookfield viscosimeter rotor no. 6, speed 5)	mPa·s	23000	± 2000
pH	-	9	± 1

- See typical color pattern
- See basketball court layout.

Buy American Act Requirements:

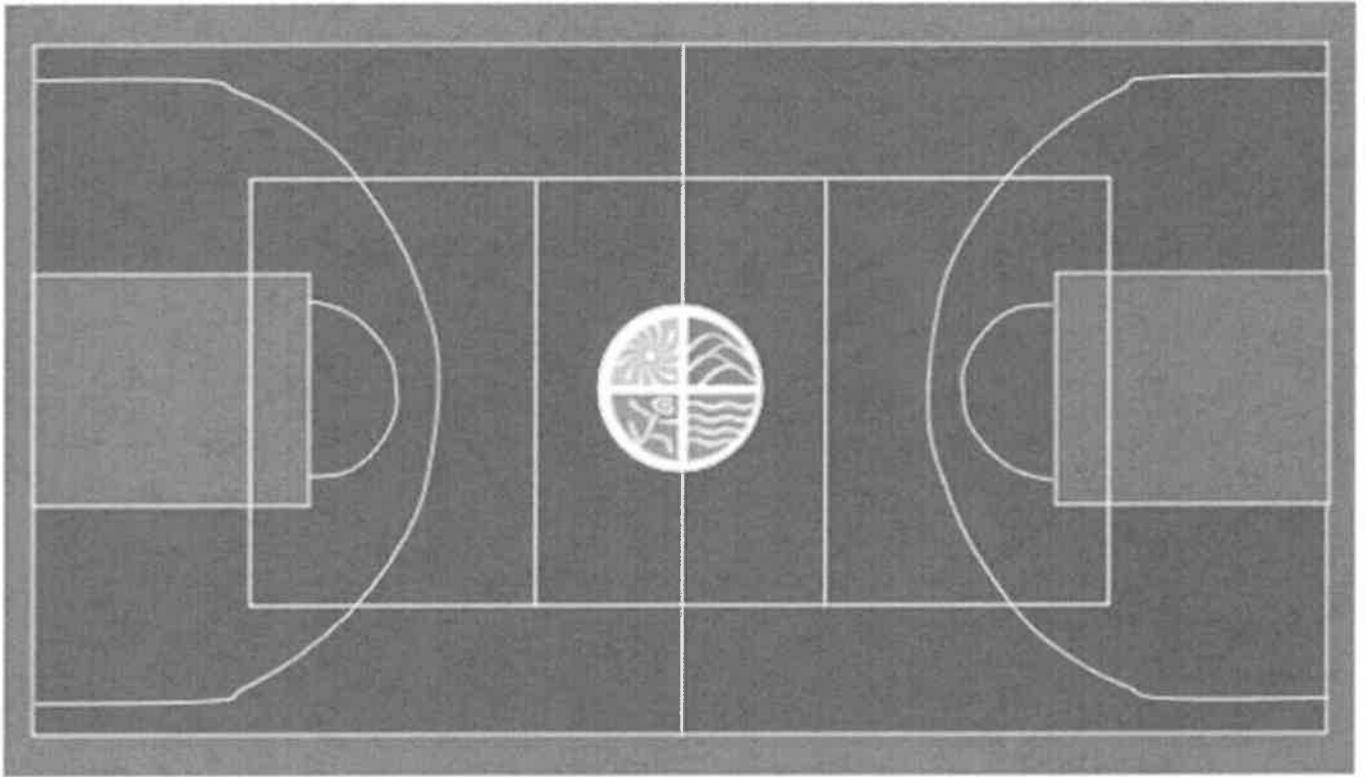
Buy American requirements apply to purchases of iron, steel, and other manufactured products permanently incorporated into infrastructure projects. To be considered as being produced in the U.S., goods must be manufactured in the U.S. and at least 50% of the cost of their components must come from the U.S.



NOTES:

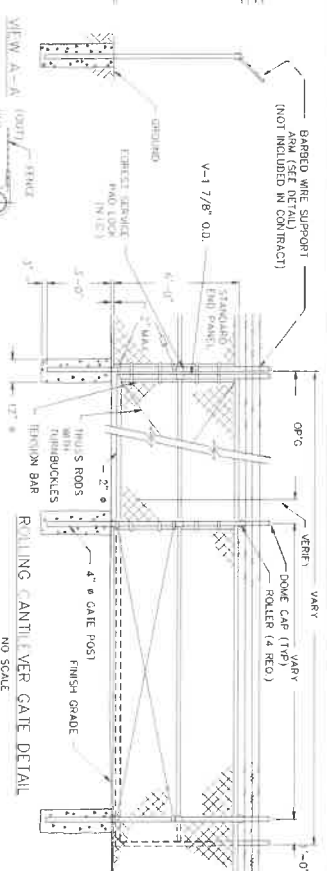
-

VOLLEYBALL COURT DETAIL



*Logo Art to be provided by owner.

Color Pattern

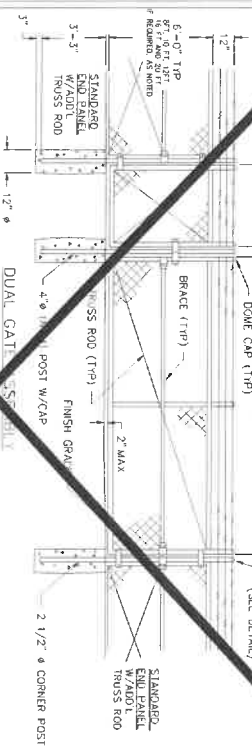


TYPICAL LINE FENCE DETAIL
SCALE: 3/8" = 1'-0"

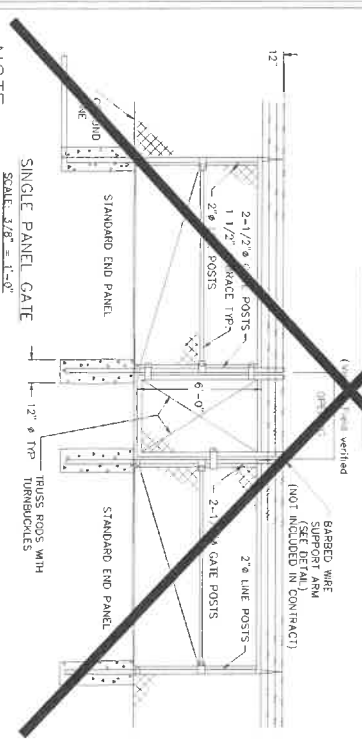
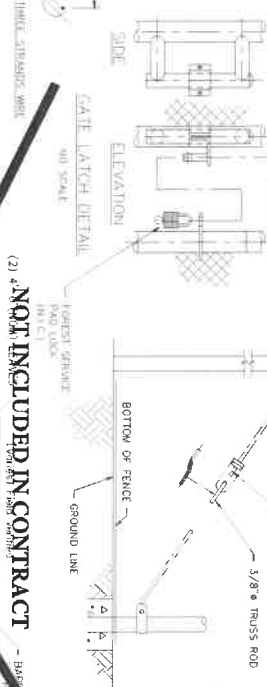
CORNER OR END PANEL ASSY
PULL POST ASSY SIMILAR (EXCEPT AS INDICATED)
SCALE: 3/8" = 1'-0"

NOT INCLUDED IN CONTRACT
DOME CAP (TYP)

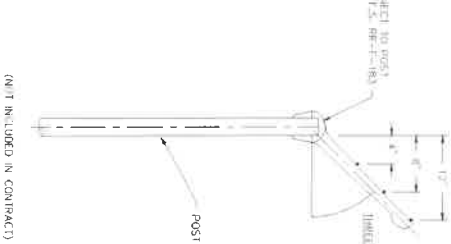
TYPICAL DETAIL
TRUSS ROD TIE
NO SCALE



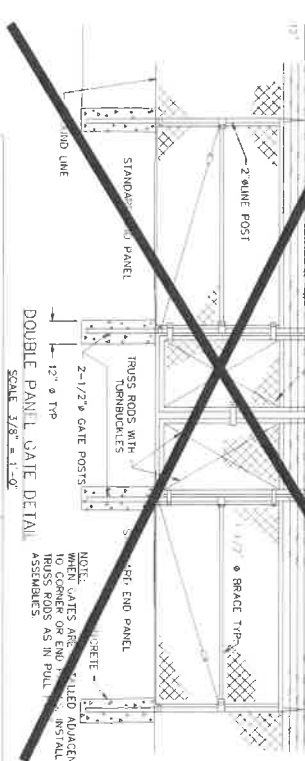
NOT INCLUDED IN CONTRACT
4. FROM ENRICHED (Vol. 185) P. 1010 and others



SINGLE PANEL GATE
SCALE: 1/8" = 1'-0"



TAIL BARBED WIRE
SUPPORT ARM AND POST CAP



DOUBLE PANEL GATE DETAIL

NOTE:
ALL FOOTING CONCRETE MUST BE 3,000 PSI

SCALE 1-1/2" = 1'-0"

[illegible]

GENERAL NOTES

NOTES:

- 1- In activities that backfill is required the contractor must use A-2-4 or similar compacted in layers of 6" inches thickness at 95% and been verified by laboratory tests, which will be paid by the contractor.
2. All document included in this bidding process are part of the contract.
3. The contractor shall connect the structure to the existing water and sewer connection services of the site if it where not connected.
4. Demolition and construction disposal will be contractor's responsibility.
5. The contractor will be responsible to implement Plan CEST, PFE (Permiso de Fuente de Emision) and DS3 (Desperdicios Solidos no Peligrosos) as required by the Junta de Calidad Ambiental. (If required)
6. The contractor shall maintained the site clean and free of debris during work in progress.
7. A boundary shall be identified on field to isolated the construction area from the areas that are not impacted. The limit will be defined using a temporary fence that must be provided by the contractor.
8. The contractor will be responsible for all the demolition and debris disposal during the construction. Everything must be coordinated with the Consultant including any foundation demolition if it where the case.
9. "The contractor will plant Soisa Meyer grass in tight squares in all the Green areas affected by the construction.
10. All site dimensions must be verified on site by the contractor.
11. The contractor shall be responsible for any damage cause by the contractor or his employee to the existing infrastructure on the field.
12. All sidewalks finishes shall be broom finish.
13. The contractor shall be familiarized with the existing site conditions before the bidding.
14. The construction site perimeter will be protected with a temporary fence.
15. The contractor will submit a work plan in addition to the cost breakdown for payment for owner's Consultant approval.
16. If applicable any slopes that are generated on the site will not have a slope greater than 1:1 and shall be duly stabilized with Jute or a Similar approved geotextile product and Soysa Meyer grass will be tightly installed for permanent stabilization.
17. The contractor Will familiarize himself with the included Electrical and structural notes and specifications where applicable.

Bid Documents for
Method of Repair (MOR)

SEAL
SIGNATURE
PROJECT NAME:
DEPARTAMENTO DE RECREACIÓN Y DEPORTES (DRD)
ADDRESS:
PUERTO RICO

DATE: July 15, 2020
REVISIONS: 03

DRAWN BY:
Miraida Rodriguez
SCALE: N/A

SHEET NAME:
GENERAL NOTES

SHEET 24 OF 26