



Urb. Sobrino Facility Damages Repair

Facility Damage – Chain Link Fence

- 1) Remove and dispose existing damaged chain link fence.
- 2) Supply and install new 6' height chain link fence sections.
- 3) Galvanized steel chain link #9 gauge 2" mesh
- 4) 2" diameter galvanized pipes
- 5) Quantity 200 LF approximately.
- 6) Refer to Standard Drawings

Facility Damage – Vegetative

- 1) Remove and dispose existing debris, palm tree and bushes.

Facility Damage – Basketball Court

- 1) Remove existing basketball court markings. See multisport Court Technical Specifications.
 - a) Apply a paint stripper
 - b) Scrape away the paint
 - c) Rinse the concrete with pressure washer
- 2) Paint multisport court markings and goals. See multisport Court Technical Specifications.
- 3) See paint in general specifications.
- 4) Paint basketball steel goal and volleyball post. See Paint notes.
- 5) Color to be selected by owner.
- 6) See SOW reference pictures.



Paint In General Specifications

- 1) Clean and patch all existing surfaces
- 2) Flooring: See Multisport Technical Specifications

Product Description:

- a. Steel Structures: Similar or equal to Sherwin Williams Pro Industrial DTM Acrylic Primer/Finish. Apply one coat of primer, two (2) coats of paint.

Buy American Act Requirements:

Buy American requirements apply to purchases of iron, steel, and other manufactured products permanently incorporated into infrastructure projects. To be considered as being produced in the U.S., goods must be manufactured in the U.S. and at least 50% of the cost of their components must come from the U.S.

Additional Notes:

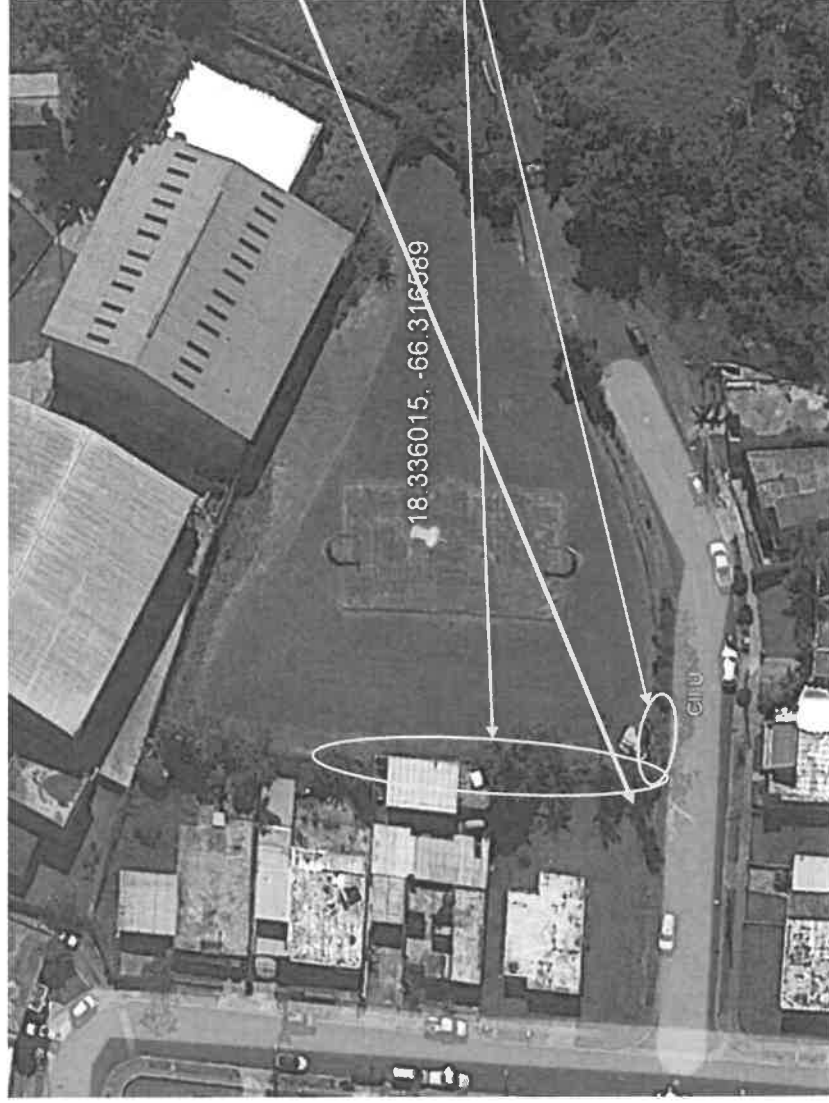
- 1) The contractor shall submit with the proposal, the proposed Synthetic Acrylic System specifications with the warranty terms and conditions. The system must be equal or similar to the specified and shall comply with a minimum of minimum five (5) year warranty, excluding damages by improper use and wear due to normal use.
- 2) The contractor shall visit the job site and become acquainted with the existing field conditions.
- 3) The contractor is responsible to comply with all laws, regulations, codes, professional licenses required by Municipal, State, Federal and Local laws.
- 4) All basketball court marking paint must be Multisport Court (Basketball and Volleyball) as specified. Where volleyball pole system is missing, the contractor must include the new volleyball net pole system as per specifications.

Damage Repairs – Urb. Sobrino, Corozal Scope of Work Reference

Coordinates: Latitude – 18.336015, Longitude: -66.316589



Existing chain link fence repairs:



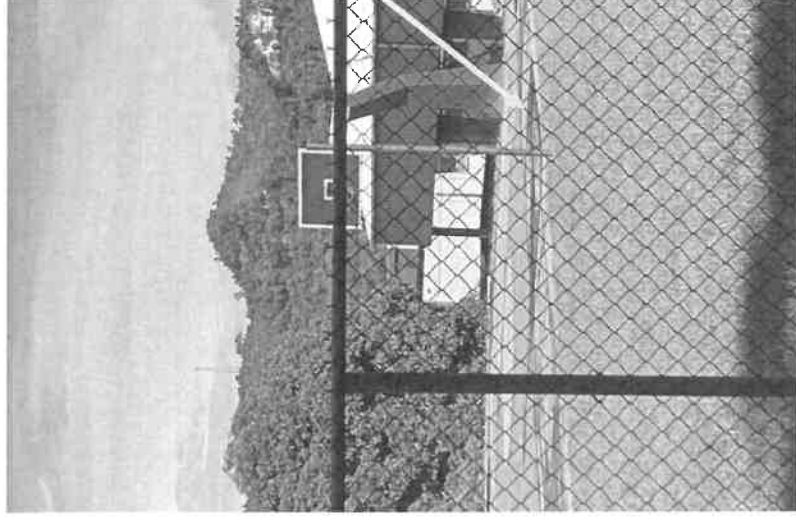
Remove and dispose existing palm tree.



Replace existing chain link fence sections (200 LF).



Paint Work:

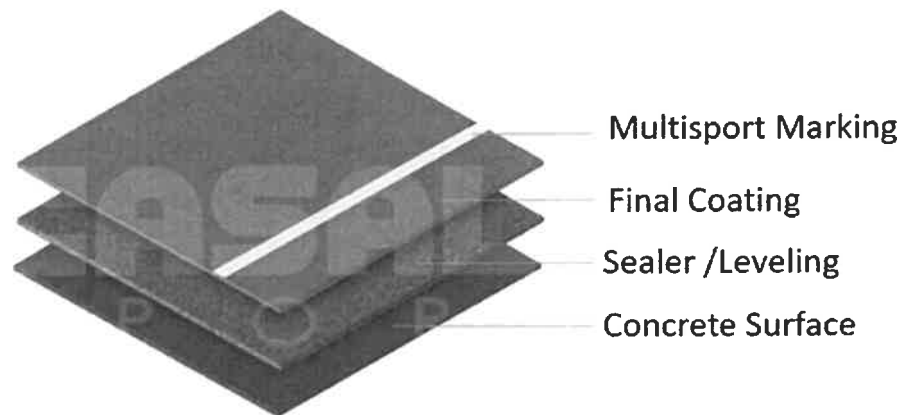


- Paint existing basketball court marking
- Paint existing basketball goal.
- Paint volleyball net steel post.



Multisport Court Repair Scope of Work
Multisport Acrylic Synthetic Flooring System
Technical Specification

Basketball Court Surface Preparation



Acrylic Synthetic Sport Flooring System

1) Concrete surface preparation

- Remove existing surface paint with paint removal product.



- Product should be compatible with acrylic system product.
- Scarify existing concrete.
- Pressure washes existing scarified concrete surface to remove all remaining dust.
- Treat all concrete cracks with product compatible and recommended by system's manufacturer.
- Seal existing concrete surface applying a synthetic resin-based filler using an acrylic resin based coating containing select sands, in water emulsion, especially formulated to seal concrete surfaces. Be sure that the product is compatible and recommended by system's manufacturer.

CHARACTERISTICS OF THE LIQUID PRODUCT			
Characteristic	U.M.	Value	Tolerance
Specific weight	Kg/dm ³	1,64	± 0,1
Dry mass residue	%	75	± 3
Dry volume residue	%	59	± 3
Residue at 450°C	%	61	± 3
Brookfield viscosity (with Brookfield viscosimeter rotor no. 6, speed 10)	mPa·s	90000	± 5000
pH	-	8	± 1

- Surface must be sloped correctly to ensure rainwater runoff and prevent pooling.
- 2) Supply and apply Final Acrylic Coating System. Acrylic resin-based covering developed for multi-purpose sports flooring. The hard resin-based formula with UV ray resistant pigments and select sands that makes the ideal sports surfaces for many different games. Resin surfaces must be waterproof (non-draining). System equal or similar to Polysport System by OAFSA.

CHARACTERISTICS OF THE LIQUID PRODUCT			
Characteristic	U.M.	Value	Tolerance
Specific weight	Kg/dm ³	1,7	± 0,1
Dry mass residue	%	76	± 3
Dry volume residue	%	60	± 3
Residue at 450°C	%	65	± 3
Brookfield viscosity (with Brookfield viscosimeter rotor no. 6, speed 3)	mPa·s	240000	± 12000
pH	-	8	± 1

- Coverage as recommended by manufacturer.
- Ductile and resistant to abrasion



- Weather Resistant
- Maintenance Free
- Always available to play even when a heavy rain or hot weather have occurred.

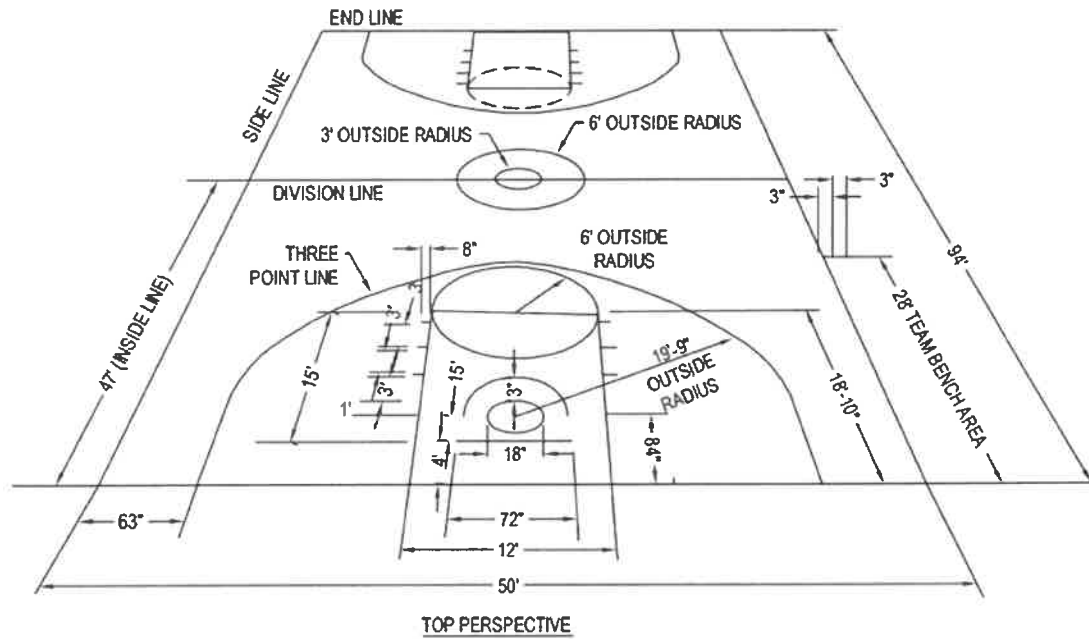
3) Basketball court marking – use a highly covering acrylic paint, especially developed to mark field (2") lines on acrylic surfaces.

CHARACTERISTICS OF THE LIQUID PRODUCT			
Characteristic	U.M.	Value	Toierance
Specific weight	Kg/dm ³	1.38	± 0.1
Dry mass residue	%	54	± 0.5
Dry volume residue	%	36	± 0.5
Residue at 450°C	%	37	± 0.5
Brookfield viscosity (with Brookfield viscosimeter rotor no. 6, speed 5)	mPa·s	23000	± 2000
pH	-	9	± 1

- See typical color pattern
- See basketball court layout.

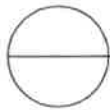
Buy American Act Requirements:

Buy American requirements apply to purchases of iron, steel, and other manufactured products permanently incorporated into infrastructure projects. To be considered as being produced in the U.S., goods must be manufactured in the U.S. and at least 50% of the cost of their components must come from the U.S.



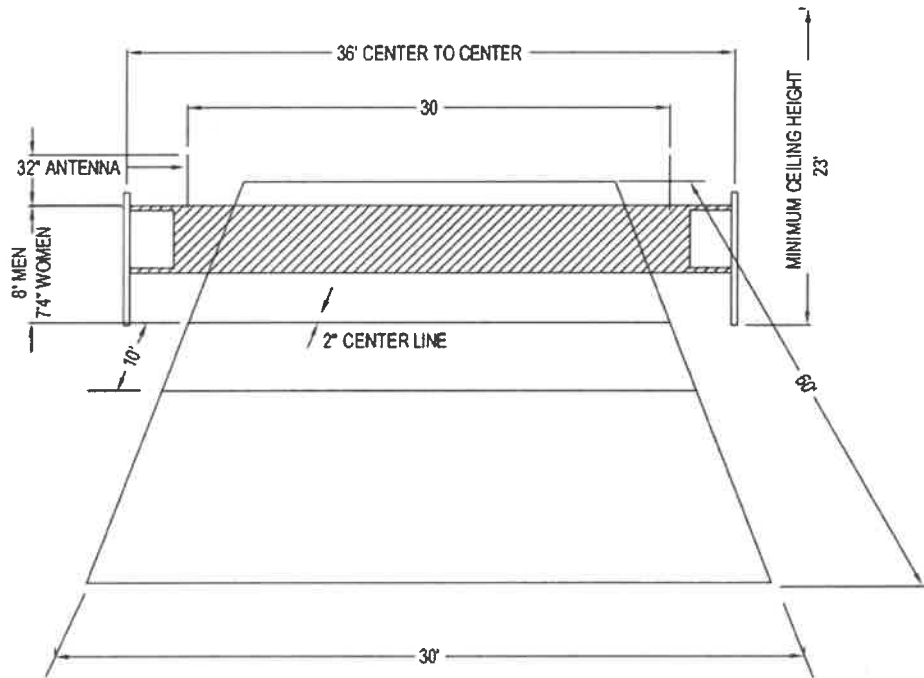
NOTES:

1. ALL DIMENSIONS ARE TO THE OUTSIDE EDGE OF THE LINES.
2. INSTALLATION TO BE COMPLETED IN ACCORDANCE WITH MANUFACTURER'S SPECIFICATIONS.
3. DO NOT SCALE DRAWING.



DETAILED DRAWINGS

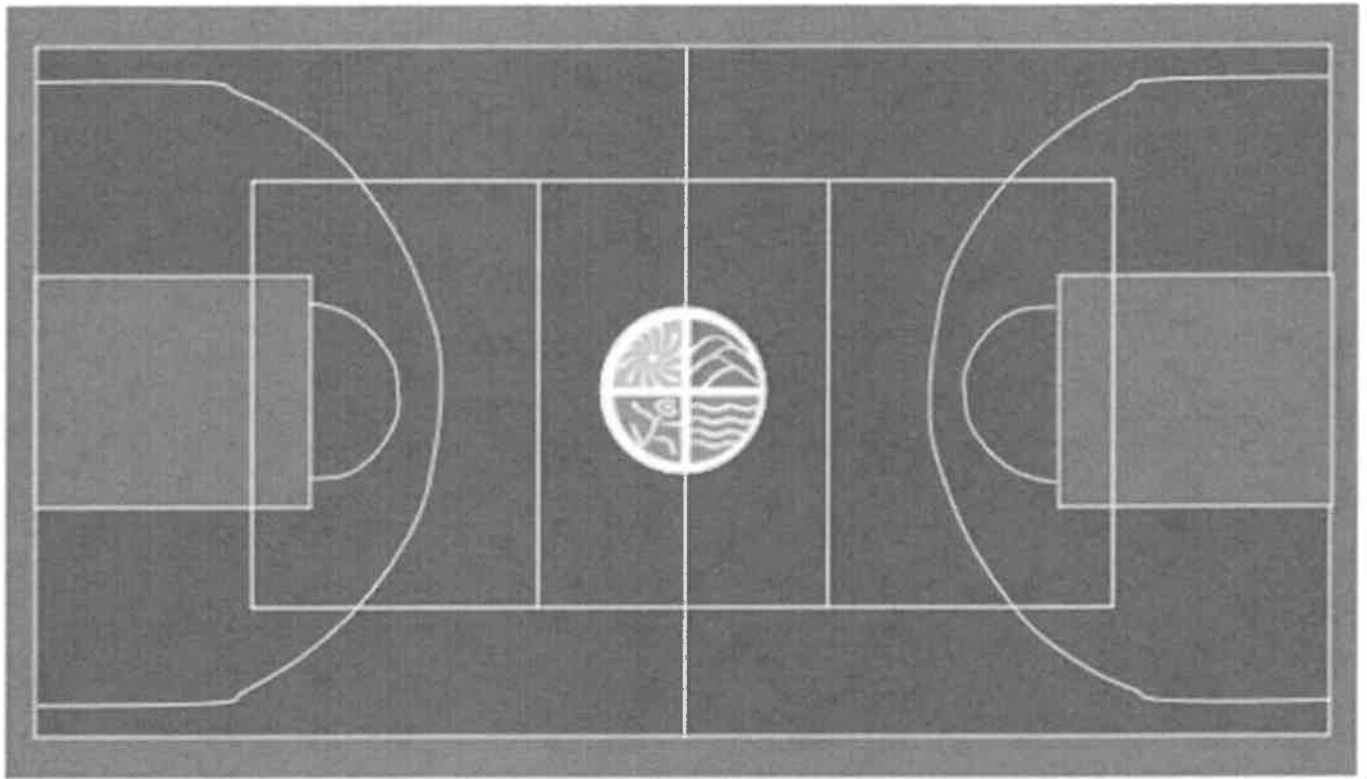
BASKETBALL



NOTES:

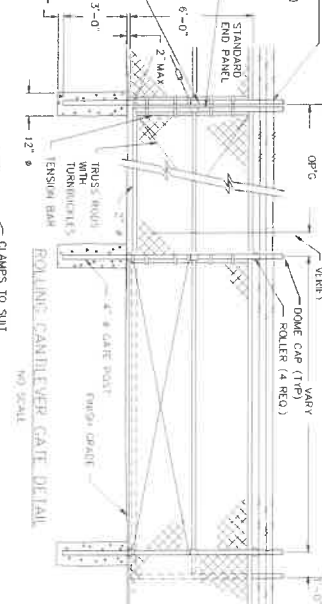
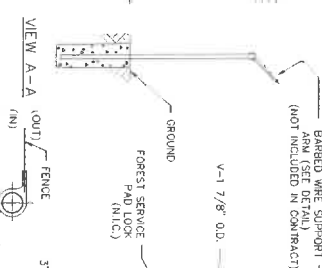
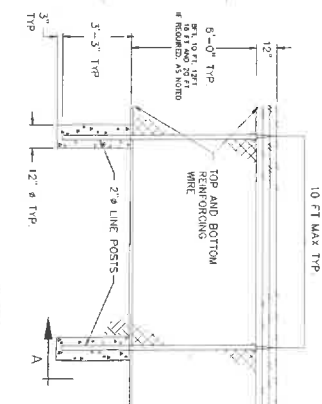
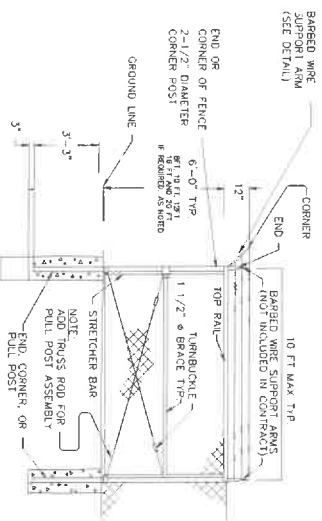
-

VOLLEYBALL COURT DETAIL



*Logo Art will provided by owner.

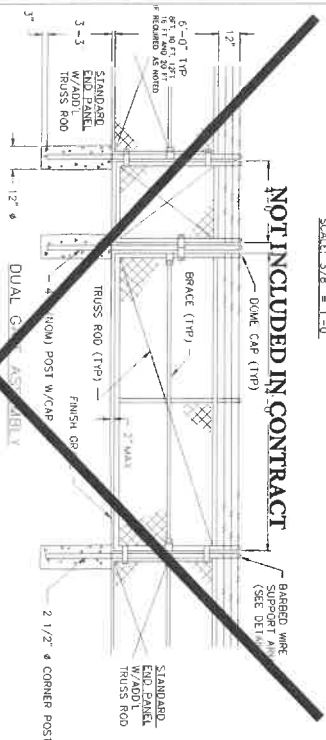
Color Pattern



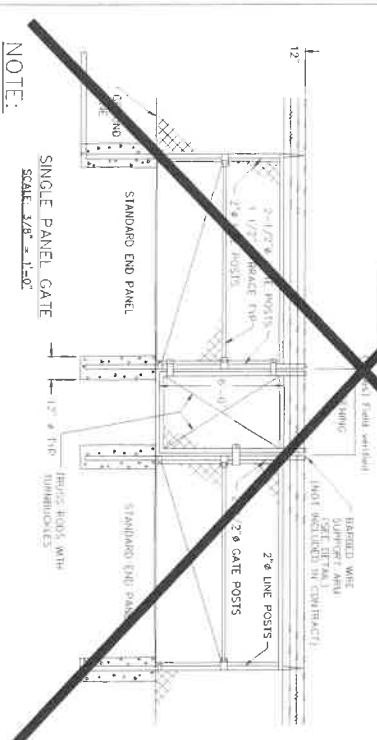
CORNER OR END PANEL ASSY
PULL POST ASSY, SIMILAR (EXCEPT AS INDICATED)
SCALE: 3/8" = 1'-0"

TYPICAL LINE FENCE DETAIL
SCALE: 3/8" = 1'-0"

NOT INCLUDED IN CONTRACT

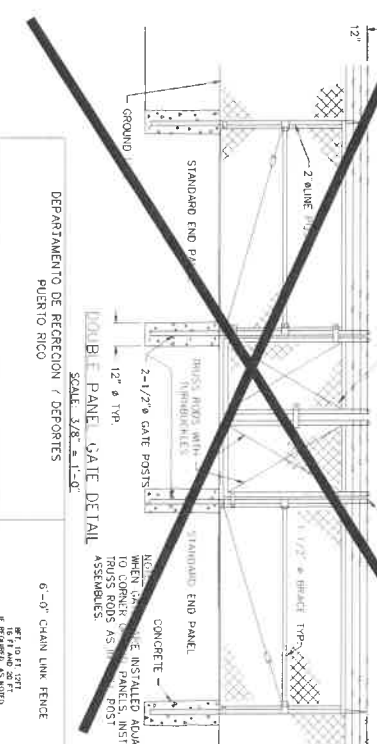


NOT INCLUDED IN CONTRACT

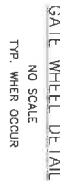
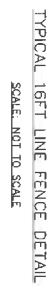


NOTE:
ALL FOOTING CONCRETE MUST BE 3,000 PSI
SCALE: 3/8" = 1'-0"

DETAIL BARBED WIRE
SUPPORT ARM AND POST CAP
SCALE: 1-1/2" = 1'-0"



APPROVED	DATE	BY	DATE	BY
DESIGNED	DATE	BY	DATE	BY
CHECKED	DATE	BY	DATE	BY
REVIEWED	DATE	BY	DATE	BY



SHI	2
Of	2

GENERAL NOTES

NOTES:

- 1- In activities that backfill is required the contractor must use A-2-4 or similar compacted in layers of 6" inches thickness at 95% and been verified by laboratory tests, which will be paid by the contractor.
2. All document included in this bidding process are part of the contract.
3. The contractor shall connect the structure to the existing water and sewer connection services of the site if it where not connected.
4. Demolition and construction disposal will be contractor's responsibility.
5. The contractor will be responsible to implement Plan CEST, PFE (Permiso de Fuente de Emision) and DS3 (Desperdicios Solidos no Peligrosos) as required by the Junta de Calidad Ambiental. (If required)
6. The contractor shall maintained the site clean and free of debris during work in progress.
7. A boundary shall be identified on field to isolated the construction area from the areas that are not impacted. The limit will be defined using a temporary fence that must be provided by the contractor.
8. The contractor will be responsible for all the demolition and debris disposal during the construction. Everything must be coordinated with the Consultant including any foundation demolition if it where the case.
9. "The contractor will plant Soisa Meyer grass in tight squares in all the Green areas affected by the construction.
10. All site dimensions must be verified on site by the contractor.
11. The contractor shall be responsible for any damage cause by the contractor or his employee to the existing infrastructure on the field.
12. All sidewalks finishes shall be broom finish.
13. The contractor shall be familiarized with the existing site conditions before the bidding.
14. The construction site perimeter will be protected with a temporary fence.
15. The contractor will submit a work plan in addition to the cost breakdown for payment for owner's Consultant approval.
16. If applicable any slopes that are generated on the site will not have a slope greater than 1:1 and shall be duly stabilized with Jute or a Similar approved geotextile product and Soysa Meyer grass will be tightly installed for permanent stabilization.
17. The contractor Will familiarize himself with the included Electrical and structural notes and specifications where applicable.

Bid Documents for
Method of Repair (MOR)

SSA

SIGNATURE

PROJECT NAME:
DEPARTAMENTO DE RECREACIÓN Y DEPORTES (DRD)
ADDRESS:
PUERTO RICO

DATE: **July 15, 2020**
REVISIONS: **03**

DRAWN BY:
Miranda Rodriguez
SCALE: **N/A**

SHEET NAME:
GENERAL NOTES

SHEET 24 OF 26