



Image 1. Place where the PG#1 will be located. Left side of existing generator from the image view.



Image 2. ATS where PG#1 will connect.



Image 3. Place where the PG#2 will be located. Right side of existing generator from the image view.



Image 4. Main Breaker of the existing generator, where the PG#2 will connect.



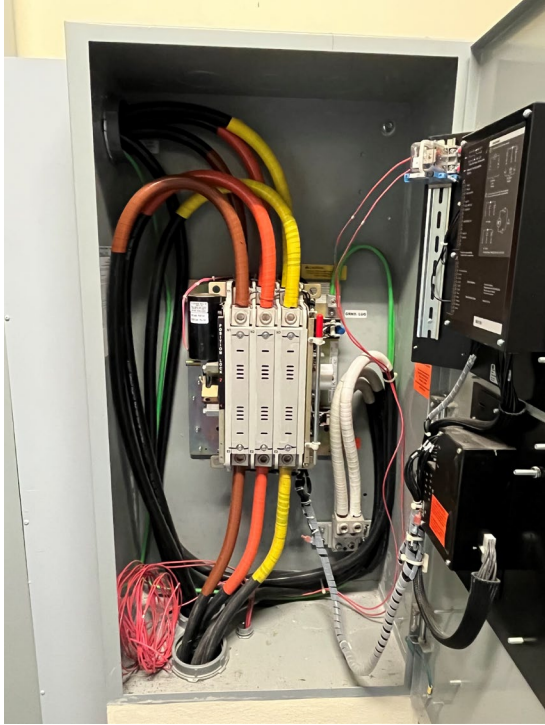


Image 5. ATS of the generator (not working) in Blg 1033.