

SCOPE OF WORKS

1. Replace existing Fan (6 ea)

EF-10 Model GREENHECK USF-27/CFM 5670/SP .5/FPM 1375/RPM 668/HP 1 /RPM 1725/VOLT 460-3-60/ALUMINUM CONSTRUCTION-UL 705 LISTED-HIGH WIND & SIESMIC RESISTANCE-CONCRETE PAD

EF-11 Model GREENHECK USF-12/CFM 450/SP .25/FPM 561/RPM 821/HP .25 /RPM 1725/VOLT 115-1-60/ALUMINUM CONSTRUCTION-UL 705 LISTED-HIGH WIND & SIESMIC RESISTANCE- CONCRETE PAD

EF-12 Model GREENHECK USF-30/CFM 7600/SP .625/FPM 1470/RPM 580/HP 1.5 /RPM 1170/VOLT 460-3-60/ALUMINUM CONSTRUCTION-UL 705 LISTED-HIGH WIND & SIESMIC RESISTANCE-CONCRETE PAD

EF-13 Model GREENHECK USF-30/CFM 7600/SP .625/FPM 1470/RPM 580/HP 1.5 /RPM 1170/VOLT 460-3-60/ALUMINUM CONSTRUCTION-UL 705 LISTED-HIGH WIND & SIESMIC RESISTANCE-CONCRETE PAD

SF-1 Model GREENHECK USF-30/CFM 8000/SP .5/FPM 1547/RPM 1170/HP 1.5 /RPM 1170/VOLT 460-3-60/ALUMINUM CONSTRUCTION-UL 705 LISTED-HIGH WIND & SIESMIC RESISTANCE-CONCRETE PAD-BACKDRAF DAMPER

SF-2 Model GREENHECK USF-30/CFM 8000/SP .5/FPM 1547/RPM 1170/HP 1.5 /RPM 1170/VOLT 460-3-60/ALUMINUM CONSTRUCTION-UL 705 LISTED-HIGH WIND & SIESMIC RESISTANCE-CONCRETE PAD- BACKDRAF DAMPER

2. Duct Works

Duct 52 in x52 in

Duct 14 in x 8 in

Duct 40 in x 40 in

Duct 20 in x 16 in

Duct 38 in x 24 in

All ductworks shall be fabricated with prime quality zinc coated sheet metal in strict accordance with the low pressure duct construction standards of the sheet metal and air conditioning contractor national association (SMACNA) Latest edition.

All duct with a dimension larger than 40 inches shall be fabrication two gage heavier than SMACNA requirements. In the addition, tack weld a 1 inch hat channel on 20-inch center along the entire length.

HIGH WIND & SIESMIC RESISTANCE

3. **Sound Attenuator**

SA-31 TYPE LINEAR/SIZE 38" X 24"/ FLOW 7600 CFM/PRESSURE DROP .07 IWG/VELOCITY -500 FPM/MODEL A-60 RUSKIN

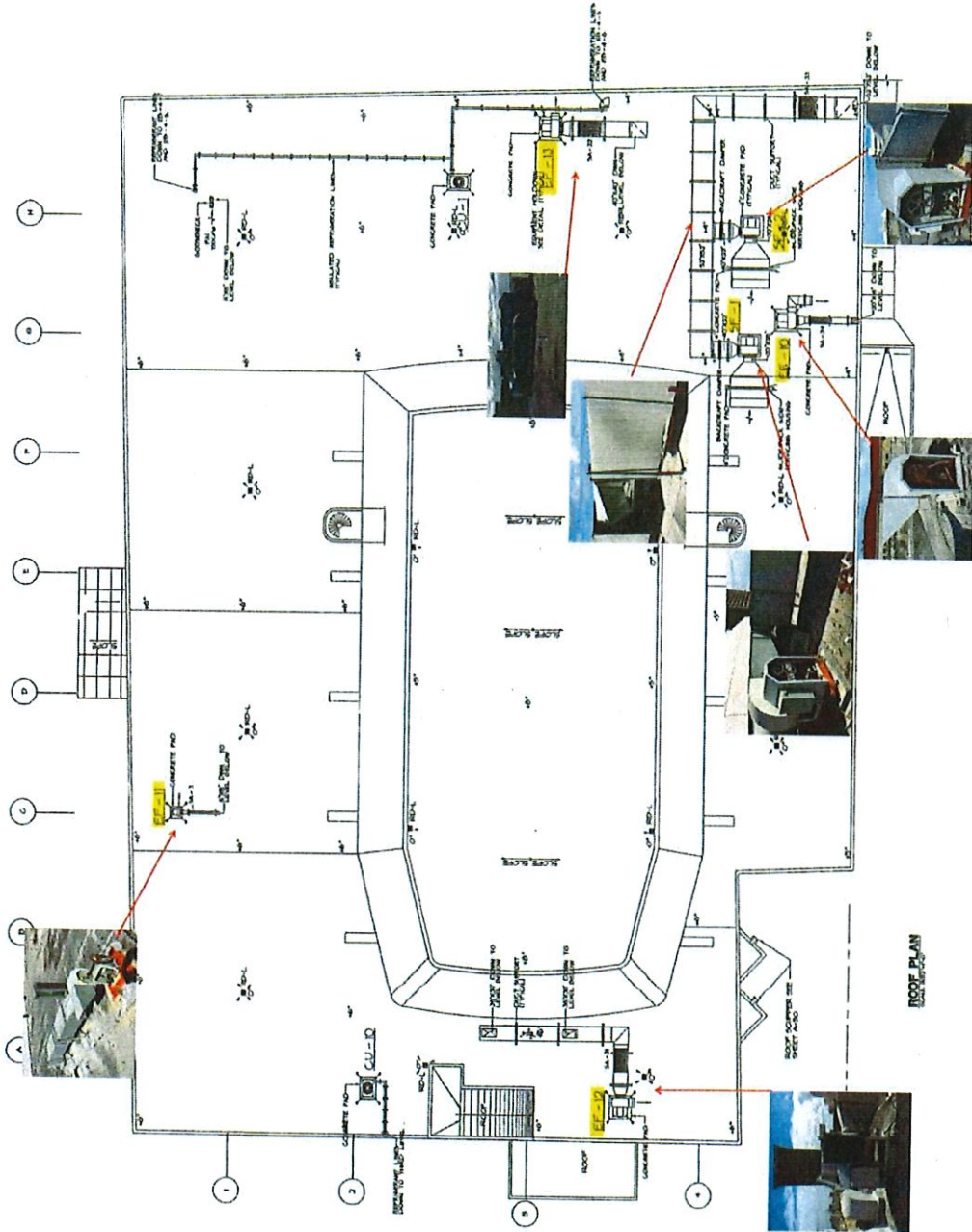
SA-32 TYPE LINEAR/SIZE 40" X 40"/ FLOW 7600 CFM/PRESSURE DROP .07 IWG/VELOCITY -500 FPM/MODEL A-60 RUSKIN

SA-33 TYPE LINEAR/SIZE 52" X 52"/ FLOW 8000 CFM/PRESSURE DROP .07 IWG/VELOCITY -500 FPM/MODEL A-60 RUSKIN

SA-34 TYPE LINEAR/SIZE 20" X 16"/ FLOW 5700 CFM/PRESSURE DROP .07 IWG/VELOCITY -500 FPM/MODEL A-60 RUSKIN

SA-36 TYPE LINEAR/SIZE 14" X 8"/ FLOW 500 CFM/PRESSURE DROP .07 IWG/VELOCITY -500 FPM/MODEL A-60 RUSKIN

ISSUE SET FOR CONSTRUCTION



CONSTRUCTION MAIL
REVISIONS AND CHANGE
 131
 17
 SCALE: 1/4" = 1'-0"
 DRAWN BY: J.B.P.
 DATE: 9/2005



om
 CONSULTING ENGINEERS
 1000 N. W. 10th Street, Suite 200, Ft. Lauderdale, FL 33304
 TEL: (954) 561-1111 FAX: (954) 561-1112
 WWW.OMCONSULTING.COM

NO.	DESCRIPTION	DATE
1		
2		
3		
4		

NO.	DESCRIPTION	DATE
1		
2		
3		
4		

NO.	DESCRIPTION	DATE
1		
2		
3		
4		

NO.	DESCRIPTION	DATE
1		
2		
3		
4		

NO.	DESCRIPTION	DATE
1		
2		
3		
4		

NO.	DESCRIPTION	DATE
1		
2		
3		
4		

NO.	DESCRIPTION	DATE
1		
2		
3		
4		

NO.	DESCRIPTION	DATE
1		
2		
3		
4		

NO.	DESCRIPTION	DATE
1		
2		
3		
4		

NO.	DESCRIPTION	DATE
1		
2		
3		
4		

NO.	DESCRIPTION	DATE
1		
2		
3		
4		

NO.	DESCRIPTION	DATE
1		
2		
3		
4		

NO.	DESCRIPTION	DATE
1		
2		
3		
4		